

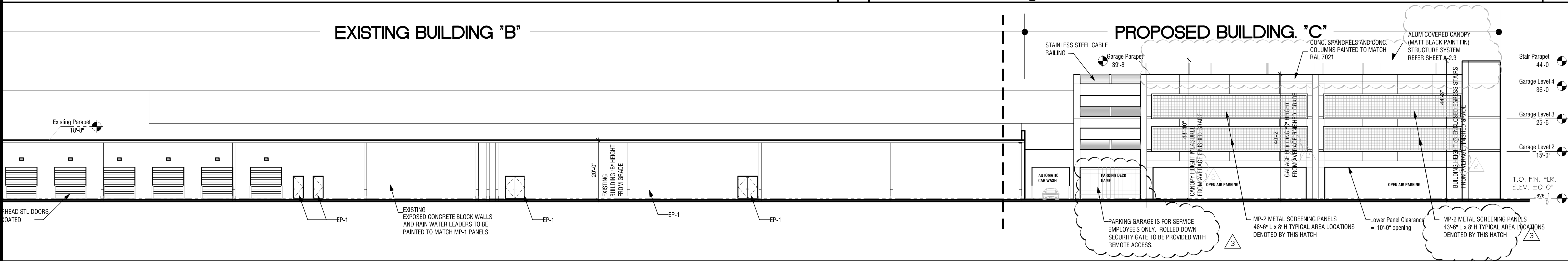
Exterior Finish Schedule				
TAG	MANUFACTURER	COLOR / FINISH	MATERIAL	DESCRIPTION/COMMENTS
CP-1	ALPOLIC METAL COMPOSITE MATERIALS, MITSUBISHI CHEMICAL AMERICA INC.	ALPOLIC BSX METALLIC SILVER (TO MATCH WH. ALUMINUM RAL 9006)	MATERIAL THICKNESS (4MM), SKIN THICKNESS .020", FINISH 3 COAT. DIMENSIONS 4H X 12L	ACM-RAIN SCREEN (DRY JOINTS), BLDG "A" SHOWROOM / OFFICE
CP-2	ALPOLIC METAL COMPOSITE MATERIALS, MITSUBISHI CHEMICAL AMERICA INC.	ALPOLIC RVW WHITE (TO MATCH TRAFFIC WHITE RAL 9016)	MATERIAL THICKNESS (4MM), SKIN THICKNESS .020", FINISH 3 COAT	ENTRANCE PYLON. 6-1/2" WIDE X 19'-8" HIGH
MP-1	PAC-CLAD PETERSEN, A CARLISLE COMPANY	COLOR: RAL 7021 BLACK GREY, MATTE FINISH	7.2 RIB METAL PANEL TRAPEZOIDAL ALUM. SHEET	TYPE SP 45/150, 0.8 MM. SYMMETRICAL CREASE HGT. 45 MM. HORIZONTALLY MOUNTED, VISIBLE FASTENERS AND NECESSARY COVERS (NOA 11-1006.2)
MP-2	McNICHOLS	PERFORATED METAL, EXTERIOR POWDER COAT PAINT FINISH IN MATT BLACK.	PERFORATED METAL ROUND, CARBON STEEL, COLD ROLLED, 16 GA. (.0598" THICK) 3/4" ROUND ON 1" STAGGERED CENTERS. 51% OPEN AREA	DECORATIVE PANELS ON NORTH, SOUTH AND EAST SIDE OF PARKING GARAGE
MC-2	PAC-CLAD PETERSEN, A CARLISLE COMPANY	COLOR: RAL 7021 BLACK GREY, MATTE FINISH	PRE-FINISHED METAL COPING TO MATCH MP-1	COPING FOR TRAPEZIUM METAL PANELS
CW-1	SLIMPACT	PERIMETER CLEAR SILVER ANOD. FRAMES. CLEAR GLASS LOW-E	IMPACT RESISTANT STRUCTURAL BUTT JOINT SYS. GLAZING AT SHOWROOM	FRAMELESS VERTICLES, BLACK SEALANT AT VERTICAL JOINTS
CW-2	OLD CASTLE	CLEAR SILVER ANODIZED FRAMES WITH CLEAR GLASS LOW-E COATING	STRUCTURAL CURTAIN WALL GLAZING SYSTEM	7-1/2" DEEP IMPACT SYSTEM; CLEAR ANODIZED
CW-3	KAWNEER COMPANY	CLEAR SILVER ANODIZED FRAMES WITH CLEAR GLASS LOW-E COATING	IMPACT RESISTANT STOREFRONT SYSTEM WITH CLEAR GLASS LOW-E COATING	SERIES 1600-1 ALUM. SYSTEM. 7-1/2" x 2-1/2" DEEP SYSTEM; CLEAR ANODIZED
DR-1	STANLEY	CLEAR SILVER ANODIZED FRAMES WITH CLEAR GLASS LOW-E COATING	ENTRANCE SYSTEM. 14'-0" W X 8'-0" H STANLEY DURA-STORM 3000 ALUM. AUTOMATIC SLIDING GLASS-LMI OH CONCEALED, MEDIUM STYLE FIXED SIDELITE, B-PARTING, LARGE & SMALL IMPACT DOOR. CLEAR ANODIZED FRAMES SO-SX-SO	
SF-1	KAWNEER COMPANY	COLOR: BLACK ANODIZED ALUM. IMPACT FRAMES WITH CLEAR GLASS LOW-E COATING	EXTERIOR STOREFRONT SYSTEM IMPACT RATED WITH CLEAR GLASS LOW-E COATING IN BLACK ANODIZED ALUMINUM IMPACT FRAMES. SERIES 500 IR ALUMINUM STOREFRONT SYSTEM PRODUCT APPROVAL, FBC (2020); FL# 8787.1 [L.M.I./S.M.I.], R9 UNIT DESIGN PRESSURES: ZONE 4: -46.08 PSF / +42.54 PSF ZONE 5: -56.70 PSF / +42.54 PSF	
SL-1	SUPERSKY OR OLD CASTLE	COLOR: CLEAR SILVER ANODIZED ALUM. FRAMES WITH CLEAR LOW-E GLASS	ANODIZED IMPACT ALUM FRAMES WITH CLEAR LOW-E COATING IMPACT GLASS	LOW SLOPE SKYLIGHT SYSTEM
EP-1	RAL COLOR MATCHING SYSTEM. RALCOLORCHART.COM	RAL 7021; SEMIGLOSS SHEEN	EXTERIOR PAINT ON HOLLOW METAL DOORS AND LOUVERS	IMPACT RATED
EP-2	RAL COLOR MATCHING SYSTEM. RALCOLORCHART.COM	RAL 9007; GREY ALUM. SEMIGLOSS SHEEN	EXTERIOR PAINT ON STEEL COLUMN	ALL EXPOSED STRUCTURAL STEEL.

Perforated Metal Panels

04

Exterior Building Finish Schedule

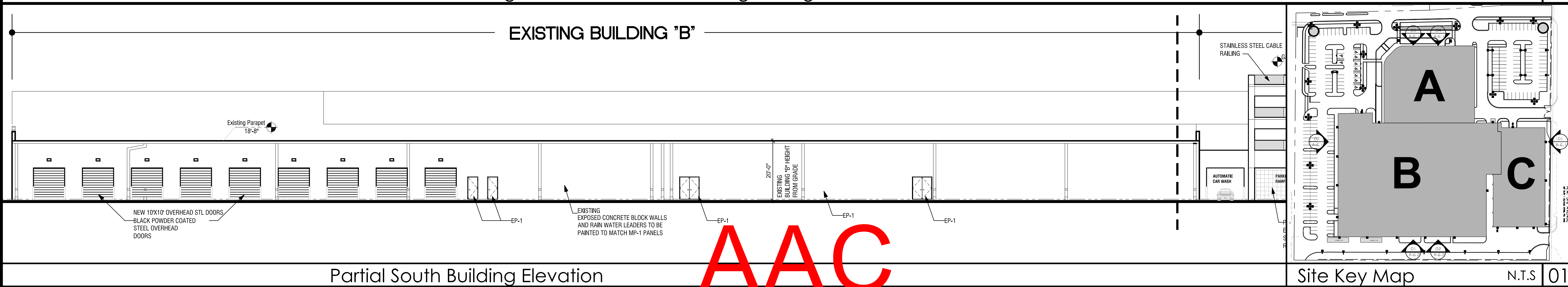
03



Partial South Building Elevation with Full Parking Garage View

Scale: 1/16" = 1'-0"

02



Partial South Building Elevation

Site Key Map

N.T.S.

01

AAC
PZ23-12000033
05/07/2024

CONSULTANT

STATE OF FLORIDA
REGISTERED ARCHITECT

Gregory B. Molina
FL REG. # AR 93354
DATE: 04-02-2024

COPYRIGHT © 2024 GBM ARCHITECTURE, P.A.
ALL RIGHTS RESERVED. THIS DOCUMENT MAY NOT BE
REPRODUCED IN ANY FORM WITHOUT
WRITTEN CONSENT FROM GBM ARCHITECTURE, P.A.

GBM
ARCHITECTURE P.A.
ARCHITECTURE
MASTER PLANNING
AA26003222

350 HINSHAW STREET, SUITE 100
FORT LAUDERDALE, FLORIDA 33319
T : 9 5 4 . 9 9 9 . 5 6 3 3
C : 9 5 4 . 8 1 2 . 6 6 8 0
E: GBM@GBMARCHITECTURE.COM
WEB: WWW.GBMARCHITECTURE.COM

Digitally signed by
Gregory B. Molina
DN: cn=Gregory B. Molina,
o=GBMARCHITECTURE, ou=GBM
Architecture, email=gbm@gbmarchi
tecture.com, c=US
Date: 2024.04.29 11:28:35 -0400

Grego
ry B.
Molina

PORSCHE CHAMPION CENTER
GENERATION V
300 NW 24TH STREET
POMPANO BEACH, FL 33064
CITY OF POMPANO BEACH
BROWARD COUNTY

DRAWING ISSUE DATES:

05-26-23:
DRC COMMENTS REV #1
02-27-24:
DRC COMMENTS REV #2
3-29-24:
DRC COMMENTS REV #3

EXTERIOR BUILDING
ELEVATIONS

SHEET
A-6.2
PROJECT 220802
DATE
PERMIT NO.